

ClassicLEDs LLC

Non Sequential LED Lights
CLE0116

Model: **1982 Thru 1992 Camaro** LED Tail Lamp conversion board version 2

The boards are designed for 12Volt Negative Ground operation. Any other power applications will destroy the LED board and void the warranty. Over voltage from a misadjusted generator or alternator system will destroy the LED board and void the warranty.

It is VERY helpful to read the instructions BEFORE installing LEDs

Ensure you TEST operation of LEDs before installing

Operation:

The LED lamp substitutes for 1157 in the tail lamp. This kit is designed so the original OEM look is maintained except when the board is in operation. The LED board operates as, tail, signal and brake lights. No other circuits are represented. Your existing wiring will operate the LED board without modification. The LED lights will be a vast improvement to OEM lights. The boards are coated on both sides. The LEDs have a clear lacquer electrical spray coating which does not interfere with the brightness of the LEDs. The back is coated with a vinyl covering to help protect from weather, but are not water proof. Should the lens gasket leak, ensure the boards are allowed to dry before operating.

During installation, do not allow back of LED boards to rest against metal portions of the body. The boards are coated to prevent corrosion, but allowing contact to the body during operation may cause a short circuit.

If the system does not work properly after following instructions, check to ensure the light socket is properly grounded. The system will not work properly if it is not grounded.

Installing the LED board:

BEFORE BEGINNING INSTALLATION, PLUG EACH BOARD INTO THE OEM SOCKET AND TEST BOARDS FOR OPERATION

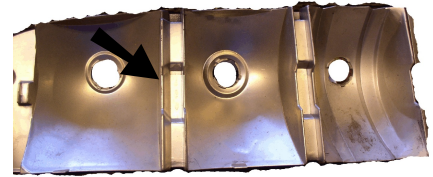
BRAKE
TURN SIGNAL
REVERSE LIGHTS

To install this system, you will be required to cut out several sections of the housing to allow proper placement of the LED board. It is advised you remove the complete housing from your Camaro and work on a suitable work bench. Ensure you carefully remove the housing. Additionally, ensure you take care not to damage the lens when removing this from the housing. There are several tabs along the top and bottom of the lens. Inspect the entire lens area for tabs or other devices used to hold the lens in place. After lens is removed, inspect gasket area. A good seal is important.

Inspect the lens after removal. Please note the tabs that extend downward from the lens.

DO NOT TRIM THESE. THIS AREA ENSURES EACH SECTION OF THE LENS IS ATTACHED TO THE SECTION NEXT TO IT. TRIMMING WILL DAMAGE THE LENS

Inspect the area within the housing where the lens tabs meet the housing. Notice the bottom of the center section. This is how far you will need to trim this area down too.



1. Remove the bezel, lens and housing from the Camaro
 - a. You will find it easier to install the LEDs on a flat stable area
 - b. Carefully remove the lens from each housing
 - i. Ensure the lens gasket is re usable
2. There is a left and a right side set of boards
 - a. Each has a label marking the proper side
 - b. Place the board on the housing and mark the areas you will need to trim



- c. After marking areas to be trimmed
 - i. Using a proper tool, such as a Dremel tool



THE USE OF SHARP KNIVES, RAZOR BLADES OR OTHER SHAPE OBJECTS IS NOT ADVISED AND MAY POSE A SAFETY HAZARD

- d. After each cut, test fit board
3. After cutting, place board within housing
 - a. Attach lens and test the operation of the LEDs
 - i. Ensure LED board is flat within the housing and aim the light thru the lens to maximize the light
 - ii. Ensure sections of light are within the proper section
 - (1) red
 - (2) yellow
 - (3) white
 - b. Use a clear silicon adhesive to secure the boards to the housing
 - i. Place a bead of silicon on the boards at points the board touches the housings
 - (1) push boards into silicon
 - (a) move boards to help ensure silicon spreads out a bit
 - ii. After installing boards
 - (1) place additional silicon on boards

- (a) ensure silicon spreads around board edge and contacts the housing
 - iii. Allow silicon to set before installing housing
 - (1) see silicon instructions for details
- 4. After installing the boards within the housing
 - a. Rotate the housing and inspect the rear area
 - i. Where the LED board is visible
 - (1) place silicon at area's board is showing
 - (2) this seals the board and protects the boards
- 5. Check to ensure the LED board lights properly
 - i. Running Lights
 - ii. Brake lights
 - iii. Turn signal
- 6. LEDs draw very little power.
 - a. should they not operate during turn signal operation, you may need to replace the OEM metal flasher with an electronic or no load flasher

A HEAVY DUTY FLASHER IS NOT REQUIRED

- 7. Should the system not operate at all, twist the LED board's 1157 pigtail to make a better contact
 - i. If lights begin operation, ensure the contacts inside the brake housing are clean and in good operation
 - b. Ensure light housing has a good ground.
 - i. LEDs use very little power and a good ground is required for proper ground for proper operation.
 - ii. Ensure lens seals are in good condition.
 - c. Due to many variations in wiring over the life of your Camaro, there is a chance the wiring has been changed or modified.
 - d. Should the system not work correctly and the lights are dim during brake operation, the blue and red wires coming from the 1156/7 socket need to be reversed
 - e. **DO NOT CHANGE THE BLACK WIRE.** This is the common wire
 - i. If you wish to hard wire the system
 - (1) Blue wire is brake
 - (2) Red wire is running lights
 - (3) Black wire is grounding
 - ii. Proper operation of this system was tested prior to shipping.
- 8. Check for proper operation before installing lens and bezel
 - i. *Ensure brake, running lights and turn signal operate properly*
 - b. Install the lens with board installed
 - i. ensure you push the wires into the housing, then install screws holding the lens in place.
 - ii. Check lights for proper operation after securing the lens.
- 9. Check local/state laws to ensure there are no restrictions regarding the operation of this system.
- 10. Should there be any other questions, please contact ClassicLEDs at 541.463.7623

ClassicLEDs@Comcast.Net.

Limited Warranty

All NorthWestMustang LLC products are warranted against defective materials and/or workmanship to all original consumer owners from the date of original consumer purchase as long as original purchaser owns the vehicle. In the event of defective materials and /or workmanship, NorthWestMustang LLC. will, without charge, repair or replace, at its option, the defective product within 60 days from the receipt of the defective product at the following address: NorthWestMustang LLC, 3128 Marvin Dr. Eugene, OR 97404 attn Warranty Dept. Postage to NorthWestMustang paid by owner. Return postage paid by NorthWestMustang LLC.

The Warranty does not apply to damage not resulting from defective materials and/or workmanship while in the possession of the original consumer or to unreasonable use by the original consumer, which includes but is not limited to improper installation, failure to provide reasonable and necessary maintenance, or commercial applications. NorthWestMustang LLC. is not liable for any incidental or consequential damages. Some states do not allow the exclusion or limitation of incidental or consequential damages, so the above limitation or exclusion may not apply to you.